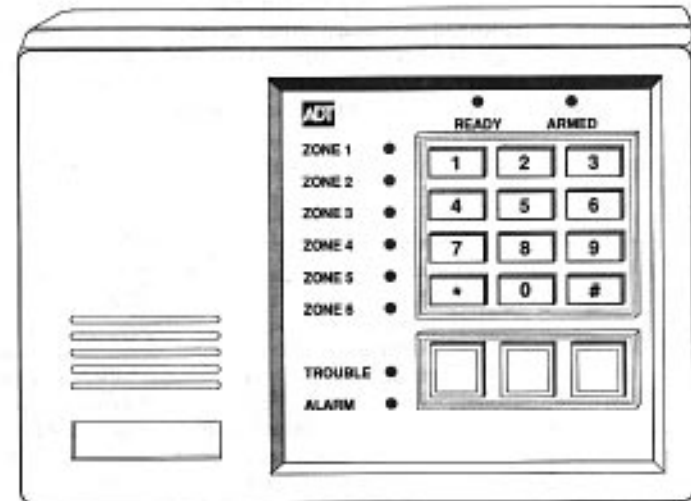




Safewatch Plus Entrepreneur



Security Systems

**USER
MANUAL**

Thank you for choosing the ADT Safewatch Plus/Entrepreneur Security System. When properly maintained, the system will provide years of reliable operation. Please note however, that no security system provides total protection of life or property. The following is a list of precautions to which you should adhere:

1. Please read this manual entirely and keep it in a secure place. If you have any questions, contact your ADT Service Representative right away.
2. The system must be tested at least once per week to ensure proper operation. Familiarize yourself with the testing procedures outlined in this manual. Contact your ADT Representative for an explanation of the benefits of an ADT Extended Warranty Program.
3. If the system is malfunctioning, have service performed as soon as possible and only by qualified professionals.
4. If alterations are made to the building's electrical system, be sure that changes are not made that could affect uninterrupted power to the control panel.
5. If service is performed to the telephone system, test the system to be sure that communication to the central station is not interfered with.
6. No security system can detect intrusion or other emergency conditions in all circumstances. Be sure to have your ADT Customer Service Representative instruct you on areas of vulnerability and recommendations for future upgrades to the system.
7. Motion detectors are designed to detect specific types of motion within a defined area. Intruders cannot be detected in obstructed areas such as behind walls and closed doors. Be sure that you fully understand exactly what areas are and are not protected and under what conditions (temperature and time variations, etc.).
8. Smoke detection devices cannot detect all types of fire, nor do they perform under all circumstances. Have your ADT representative explain the limitations of the fire system to you and your family. Have smoke detectors cleaned and tested on a regular basis.
9. Security systems rely upon AC as a primary power source. When AC fails, the control will be powered by a standby battery. For this reason, the standby battery should be checked and replaced by a qualified service technician at regular intervals.
10. The system is capable of being armed with AC power absent. The system could then fail if the battery voltage falls below the acceptable range, before AC power is restored. Please note that it is possible to arm the system with the standby battery disconnected.
11. If the operating panel "Trouble" light is ever on, refer to page D or contact your ADT Representative immediately to determine the nature of the "Trouble" condition.
12. If upon returning to the building you discover that an alarm has occurred, **DO NOT ENTER THE PREMISES**. Go to the nearest telephone and contact the proper authorities immediately.
13. Be sure to inform your neighbors that a security system has been installed. Also explain the meanings of the various audible signals and ask them to contact the appropriate authorities upon activation of an alarm.
14. U.L. requires audible burglar alarms to be provided by a bell and fire alarms to be provided with a horn. For combination burglar and fire alarm systems, the sounder will emit a steady tone for fire alarms and a pulsing tone for burglar alarms. The fire alarm signal takes priority over the burglar bell.
15. U.L. Requirements: Exit time may not exceed 60 seconds. Entrance time may not exceed 45 seconds. Cut-off time for siren/bell cannot be less than 4 minutes. Your system is programmed as follows:

Exit Time = _____ seconds

Entrance Time = _____ seconds

Table of Contents

System Reference	4
Operating Your System	5
ARMING	5
Arming The System Prior To Leaving	5
Arming The System Without Leaving	5
System Will Not Arm (Ready Light Off)	6
DISARMING	7
Disarming Upon Entering The Premises	7
ALARM CONDITIONS	8
What To Do If An Alarm Occurs	8
False Alarms	8
THE EMERGENCY PANIC ALARM KEYS	9
Emergency Alarm Activation	9
Resetting The Emergency Alarm	9
SPECIAL FEATURES	10
Chime Mode	10
Bypassing Zones	11
Key Switch Operation	12
Access	12
The Reset Key	12
Audible Zone Testing	13
FIRE DETECTION	14
What To Do If The Fire Alarm Sounds	14
Emergency Evacuation Plan	15
Fire Prevention and Escape	16
Fire Protection	17
Emergency Evacuation Route	19
Glossary	20
Index	22

System Reference

Zone Identification Card
Space is provided for recording the areas of protection which are assigned to each zone. Depending upon the installation, this card pulls out from the left or right side of the control station.

Individual Zone Indicators
If lighted, zone is not secure. Check doors, windows, etc.
If not lighted, zone is secure.
If blinking, zone is bypassed.

Ready Indicator
If lighted, the system is ready to be armed.
If not lighted, one or more zones are faulted. Indicator(s) of zone(s) at fault will be lighted.

Armed Indicator
If lighted, the system is armed.
If not lighted, the system is disarmed.
If blinking, time is being provided to exit the building, after which the system will be armed.

Trouble Indicator
If lighted, a trouble condition exists. See "Trouble Conditions."

Alarm Indicator
If lighted, an alarm has occurred.

Emergency Panic Keys
PANIC A = Fire
PANIC B = Police
PANIC C = Emergency

NOTE: The Emergency Panic Keys may or may not be active. See your ADT Customer Service Representative.

Important Phone Numbers

ADT:	
Police:	
Fire:	

Operating Your System

ARMING

Arming The System Prior To Leaving

Before the system can be armed, all intrusion zones must be secure and the green READY indicator must be on. If the READY indicator is off, one or more zones are faulted. Each faulted zone can be identified by its lighted zone status indicator. Refer to the pull-out Zone Identification (I.D.) Card located on the left or right side of the operating panel to determine the Areas of Protection assigned to each of the system's six "zones." Check the specific doors, windows, etc. protected by the indicated zone(s) to be sure that they are closed.

1. Verify that the READY indicator is on.
2. Enter your User Code.
3. Upon arming, the red ARMED indicator will flash and the operating panel will beep (if so programmed) throughout the assigned exit delay* time period.
4. Leave the building immediately.

* The exit delay provides a pre-set amount of time for you to leave through specific areas without causing an alarm. Be sure that you are informed about which routes to enter and exit without causing an alarm. When the exit delay ends the ARMED indicator will be steady and the beeping will stop. *If too much time is taken to exit, the system will start the entry delay time period, indicated by a steady beep tone. If this happens, do not leave. Disarm the control and start over to avoid a false alarm.*

Arming The System Without Leaving

Your security system is divided into two areas of protection:

1. **PERIMETER** — Protected doors and windows.
2. **INTERIOR** — Areas of the building which are protected by motion detectors, interior door contacts and sensors hidden under the carpet.

If you are planning to stay in the building but would like the perimeter protection turned on, you may turn off the interior protection before arming. This allows freedom of movement within the building while the system is armed. When the interior zones are turned off, the system will ignore them but will still alarm if any perimeter doors or windows are violated.

❑ Turning Off the Interior Zones Prior to Arming

1. Press the 4 key and hold for three seconds. The READY and ARMED indicators will flash, indicating that a code is required to authorize this command..
2. Enter your User Code within 8 seconds or the system will automatically clear the command sequence. If this happens you must return to step 1. The interior zones will be turned off and the corresponding ZONE indicators will flash* to indicate the areas that have been turned off.
3. Arm the system by entering your User Code.

* Upon arming, the flashing will disappear 30 seconds after expiration of the exit delay time. This prevents intruders from looking at the operating panel and seeing that an area is turned off.

Note: Upon disarming, the interior zones automatically re-enable unless your installer has altered this feature through programming.

❑ Automatic Interior Off/Delay Off

Your system may have been programmed so that the interior is automatically turned off for you if you arm and do not leave the building during the exit delay time. For added security, the entry delay may also have been programmed to be canceled at this time. When the system is disarmed, the interior protection and entry delay will return to their normal on or off state.

❑ Two Digit Arming

Your system may have been programmed with a simplified arming feature. When this feature is enabled, only the first two digits of your User Code will be required to arm the system and perform other features. Disarming however, will still require the entire code sequence.

System Will Not Arm (READY Light Off)

If the READY light is off, the system cannot be armed. One or more of the six ZONE indicators will also be lighted identifying the area of protection that is at fault. Use the pull-out Zone I.D. Card on the operating panel to determine the area of protection assigned to each zone. Usually, a protected door or window has been left open. Check all protection within the indicated zone(s).

NOTE: If you attempt to arm the system with the READY light off, a three second error tone will be sounded to alert you that the system did not arm.

DISARMING

Disarming Upon Entering The Premises

Your system is programmed with one or more "entry delay zones" which allow time to enter the building without causing an alarm. Each "delay" door may be programmed with one of two entry times.

Note: If your system has the "Interior Follower" feature enabled, all interior designated zones automatically become delay zones whenever you first enter through a "delay" door. This allows you to walk in front of motion detectors on the way to the operating panel without causing an alarm.

1. After entering the building through a delay door, the operating panel will sound a continuous tone to remind you to disarm the system.
2. Enter your User Code.
3. The red ARMED indicator should be off to show that the system is disarmed.

CAUTION: If the ALARM indicator is lighted, an alarm has occurred. Leave the building immediately and go to the nearest phone to contact the appropriate authorities.

ALARM CONDITIONS

What To Do If An Alarm Occurs

Whenever an alarm occurs, the ALARM indicator will light, the audible alarm will sound (if equipped), and the control will transmit an alarm signal to the central station if so programmed.

NOTE: If upon returning to the building you discover that an alarm has occurred, **DO NOT ENTER THE PREMISES.** Leave immediately. Go to the nearest phone and contact the appropriate authorities.

To reset and/or silence the alarm:

1. Enter your User Code.
2. The alarm should reset and/or silence but the ALARM indicator will remain lighted along with the zone indicator(s) for the area(s) that caused the alarm. Use the pull-out Zone I.D. Card to determine the area of protection that caused the alarm.

NOTE: If the alarm was manually activated by pressing one of the emergency panic keys, no zone indicators will be lighted.

Press the “*” key to extinguish the ALARM and zone indicator after determining the type of alarm and area of protection involved.

A history of the last alarm condition is stored in the control’s memory and may be recalled at any time. See “Special Features” for more information.

False Alarms

If for any reason a false alarm occurs, perform the following steps:

1. Enter your User Code to reset and/or silence the alarm.
2. The ARMED light should turn off.
3. Notify the appropriate authorities of the alarm immediately.
4. If necessary, use the pull-out Zone I.D. Card to identify the area of protection which caused the alarm.
5. Press the “*” key to extinguish the ALARM and zone indicator after determining the type of alarm and area of protection involved.

THE EMERGENCY PANIC ALARM KEYS

Your system may have been purchased with up to three manually activated emergency panic alarm keys. Depending upon how your system is programmed, these keys may be used to activate an alarm in the event of a Fire, Hold-up or other Emergency. Each alarm is activated by pressing the appropriate emergency alarm key (located below the numeric keys) and holding it for three seconds. Each alarm may be programmed audible or silent as well as to report the condition to the central monitoring station. Check with your security representative to determine the specific characteristics of your system.

Emergency Alarm Activation

Each of the three emergency panic alarm keys (from left to right: A, B, and C) can initiate a specific type of alarm provided it is programmed and labeled by your installer.

To activate an emergency panic alarm:

1. Press the appropriate emergency key and hold it depressed for three seconds. The emergency alarm will activate.

Resetting the Emergency Alarm

When an Emergency Alarm is activated, the ALARM indicator will be lighted. Note: The emergency hold-up alarm will not cause the ALARM indicator to light if it has been programmed for “silent” operation.

To reset the alarm:

1. Enter your User Code.
2. Press the “*” key to turn off the ALARM indicator.

A history of the last alarm is stored in the control’s memory and may be recalled if desired. (See “Special Features”).

SPECIAL FEATURES

Chime Mode Operation

The CHIME mode allows audible monitoring of zones while the system is disarmed. For example, when the CHIME mode is activated, the operating panel will beep two times whenever a protected door or window has been opened. Many businesses use this type of signal for their front door to announce that a customer has entered. In a residential application, the CHIME is useful for monitoring opening of doors or windows by children.

❑ To Turn CHIME On

1. The system must be disarmed.
2. Press the "6" key and hold for three seconds. The control station will beep three times to indicate that the CHIME has been turned on.
3. The operating panel will now beep two times when any protected perimeter door or window is opened.

Note: The CHIME feature does not monitor or annunciate interior zones.

❑ To Turn CHIME Off

1. Press the "6" key and hold for three seconds. The operating panel will beep two times to signify that the CHIME has been turned off.

Bypassing Zones

The bypass key (#) is used to bypass selected zones in your system. A bypassed zone is temporarily removed from your system and will not be capable of activating an alarm. Bypassing is most commonly used to allow free movement within an area (zone or group of zones) while arming the rest of the system. Bypassing is also useful to temporarily remove a zone or zones that require service, allowing partial use of the system until repaired.

Note: When zones are bypassed, security is compromised. Do not instruct temporary users on use of the bypass feature.

❑ To Bypass A Zone

1. The system must be disarmed.
2. Press the BYPASS key (#) then enter the number of the zone (1-6) to be bypassed. The READY and ARMED indicators will flash to indicate that a User Code is required to authorize the command.
3. Enter your User Code within 8 seconds or the system will automatically clear the command sequence. If this happens you must return to step 2. After the zone is bypassed, the corresponding ZONE indicator (1-6) will flash * to indicate the area has been bypassed.

* Upon arming, the flashing will disappear 30 seconds after expiration of the exit delay time. This prevents intruders from looking at the operating panel and seeing that an area is turned off.

4. Repeat steps 2 and 3 to bypass other zones.

❑ To Cancel A Zone Bypass

1. The system must be disarmed.
2. Press the BYPASS key (#) followed by the number of the zone (1-6) to be restored to service. The READY and ARMED indicators will flash to indicate that a User Code is required to authorize the command.
3. Enter your User Code within 8 seconds. The ZONE indicator of the previously bypassed zone will stop flashing.

❑ To Cancel All Zone Bypasses

1. Press the BYPASS key (#) followed by key "9".
2. All ZONE indicators will stop flashing. The zones are returned to operation.

Key Switch Operation

Your system may utilize a conventional key switch for arming and disarming the system. Arming and disarming with a key switch is performed as follows:

❑ Arming

1. Verify that the READY light is on.
2. Insert your key into the key switch and turn. Hold for one second and release.
3. The red ARMED light will flash during the exit delay cycle and then light steady when the system arms.

❑ Disarming

1. Insert your key into the key switch and turn. Hold for one second and release.
2. The red ARMED light will go out indicating that the system is disarmed.

Access U.L. Note: The control is not listed to Standard U.L.294 Access Control Units

If your system was purchased with the ACCESS feature, the operating panel can be used to switch other devices on and off or as a timed switch. This feature is most commonly used to activate an electronic door release or switch lights on and off.

The Reset Key

The “ * ” key may be used to:

- ❑ Silence the operating station sounder and the audible output during fire and emergency alarms.
- ❑ Silence the operating station sounder during Burglar alarms.
- ❑ Exit the audible test mode.

NOTE: Pressing the “ * ” key does not reset alarms or cancel alarm signal transmissions to the central station.

Remote Programming

Your system is capable of being programmed remotely from ADT's service office. The operating station provides a means of verifying if this feature has been enabled. Refer to page C or contact your ADT representative for more information.

Programming

You may change certain programming of your system through the operating panel. To enter the programming mode, press key 9 and hold for three seconds, then enter the Master User's Code.

WARNING: Do not attempt to program the system unless you have been properly trained on programming procedures and are sure that you fully understand this operation.

USER CODES

Your system may be programmed to accept up to five regular *User Codes* and one *Master User Code*. Each code may be comprised of any four digit sequence. (Do not program 1234 or 1111 as User Codes). Codes may be added, deleted, or changed as necessary.

WARNING: Once the Master User's Code (Code 1) is installed, an error made in changing or deleting the Master User's Code may result in Lock-Out to further programming or control access. This will require an ADT service call to re-install the Master User's Code.

The Master User Code (code 1) performs all of the normal User Code functions plus it allows access to the programming mode.

User Code 6 is unique in that it may be optionally programmed as a *Temporary User Code* with a limited number of valid uses, after which it becomes inoperable. Refer to page C for more information about this code.

Changing or Adding User Codes

IMPORTANT NOTE: If an error is made while programming a user code, improper operation may occur. If an error is made, we recommend that you should press the "*" key five times and start over from step 1.

1. The system must be disarmed.
2. Press key 9 and hold for three seconds. The operating panel will beep three times.
3. Enter the Master User Code. The operating panel will beep two times. The READY and ARMED indicators will flash alternately and the other eight indicators will also flash when the programming mode is successfully entered (see note ¥ on the bottom of page C).
4. Use the numeric keys to select the User Code number (1-6) that is to be changed or added, then press the "#" key. For example, press 4 then "#" to add or change User Code 4, or press 1 then "#" to change the Master User Code, etc. The operating panel will beep three times to signify acceptance.
5. Enter the desired new 4 digit code sequence. After the fourth digit is entered, the operating panel will emit one short beep followed by one long beep then the system will exit the programming mode automatically. To change or add another code, repeat the procedure starting at step 2.

Deleting a Code

1. The system must be disarmed.
2. Press key 9 and hold for three seconds. The operating panel will beep three times.
3. Enter the Master User Code. The operating panel will beep two times. The READY and ARMED indicators will flash alternately and the other eight indicators will also flash when the programming mode is successfully entered (see note ¥ on the bottom of page C).
4. Use the numeric keys to select the User Code number (1-6) that is to be deleted, then press the "#" key. For example, 4 then "#" to select User Code 4. The operating panel will beep three times to signify acceptance.
5. Pressing the 0 key four times will delete the user code. The operating panel will beep three times to signify acceptance and the system will automatically exit the programming mode.

B

Programming A Temporary Code (User Code 6)

An optional feature of your system allows you to assign a certain number of valid uses to User Code 6. This code may be assigned to a maintenance person, a maid, or anyone that you would like to be able to arm and disarm the system for a selected number of times without having to give out your regular code. After the code has been used the programmed amount of times, it becomes inoperable. The same code can be re-enabled at a future time by programming an additional number of uses. It will not be necessary to re-program the actual code unless changing the code itself is desired.

1. If you have not already done so, program User Code 6 by following steps 1 thru 5 on page B under "Changing or Adding A User Code". Then proceed with steps 2 thru 6 below to assign the number of valid uses for User Code 6.
2. Press key 9 and hold for three seconds. The operating panel will beep three times.
3. Enter the Master User Code. The operating panel will beep two times. The READY and ARMED indicators will blink alternately and the other eight indicators will also flash when the programming mode is successfully entered (see note ¥ on the bottom of this page).
4. Press key 7 then # to instruct the control that you wish to program the number of valid uses for User Code 6. The operating panel will beep two times.
5. Enter the number of temporary uses desired, 1 to 254, then press the "*" key. The operating panel will beep two times. To make User Code 6 a permanent code, enter 255 for the above value.
6. Press the "*" key once to exit the programming mode.

Note: The temporary code performs all of the normal User Code functions just as codes 1 thru 5 do, with the exception that only the Master User Code (Code 1) allows entry into the programming mode.

¥ NOTE REGARDING REMOTE PROGRAMMING:

If the bottom ALARM indicator lights steady after entering the programming mode, your system has been enabled for Remote Programming. This feature enables the ADT Central Station to remotely program your system.

C

Using the Diagnostic Overlay

IDENTIFYING TROUBLE CONDITIONS

If a “trouble” condition occurs, the TROUBLE indicator on the operating panel will light. The cause of the trouble condition can be determined through the use of the “Diagnostic Overlay” card.

1. Position the Diagnostic Overlay card over the operating panel with the side labeled “Identifying Trouble Conditions (Key 2)” facing toward you. The operating panel indicator lights should line up with the holes in the card.
2. Press key 2 and hold for three seconds. The operating panel will beep and one or more of the indicators will light. (Note: The system will exit this mode automatically after eight seconds. If more time is needed, simply repeat this step). Read the words printed to the left of the lighted indicator(s) to define the nature of the trouble condition. The definition of each condition and recommended procedure(s) involved to resolve the problem are printed on the card. If the trouble condition cannot be resolved, contact your local ADT Service Representative as soon as possible.

IDENTIFYING ALARM MEMORY

When an alarm occurs the red ALARM indicator lights. A memory of the cause of the alarm is stored in the control’s memory. This information may be retrieved by using the “Diagnostic Overlay” card.

1. Position the Diagnostic Overlay card over the operating panel with the side labeled “Identifying Alarm Memory (Key 3)” facing toward you. The operating panel indicator lights should line up with the holes in the card.
2. Press key 3 and hold for three seconds. The operating panel will beep and one or more of the indicators will light. (Note: The system will exit this mode automatically after eight seconds. If more time is needed, simply repeat this step). Read the words printed to the left of the lighted indicator(s) to determine the kind of alarm that last occurred (burglar, fire, police or emergency). One or more of the six ZONE indicators will also be lighted to indicate the area that was violated when the alarm occurred unless the alarm was activated manually by one of the operating panel emergency panic keys.
3. Press the “*” key to turn off the ALARM indicator. If the cause of the alarm cannot be determined, call your ADT Service Representative.

Audible Zone Testing

This feature is used to test your system’s Burglar detection zones.

1. The system must be disarmed.
2. Refer to the Zone I.D. card to determine the area of protection which corresponds to each zone.
3. Press the 8 key and hold for three seconds. The operating panel will beep three times to indicate that the system is in the TEST mode. The operating panel will also beep once every 60 seconds to remind you that you are in the test mode.
4. Test protected areas by operating the protective device(s) in each zone (ie., opening protected doors or windows, walking in front of motion detectors., etc.).

The operating panel will begin beeping and the corresponding zone light will turn on as you cause each device to “alarm”(opening each door or window being tested). Restoring each device (closing the doors or windows which you are testing) will silence the beeping until you cause another device in the zone to “alarm”. The zone light(s) will remain on throughout the testing period. Continue testing each device in each zone by first causing an “alarm” then “restoring” the device. The beeping will indicate that each device is working properly.

Note: Only Burglar detection zones should be tested in this mode. Fire, Police and Emergency zones (if purchased) will remain active during the test mode and will still trigger an alarm if activated.

5. Return to the operating panel. A zone light will be on for each zone which you have tested.
6. Press the “*” key to exit the test mode. The zone indicator lights will return to their normal status.

Your ADT installer will also program your security system’s digital communicator to send a periodic test signal to the ADT central station. This ensures that the digital communicator is in proper operating condition, and that the central station is receiving the communicator’s transmission.

Note: Your system should be regularly tested at least once per week to insure proper operation. If you have any questions, contact your local ADT service representative.

FIRE DETECTION

Your system may include fire detection capability, depending upon what options were purchased, and the local codes and regulations for your area. Fire alarm systems are active 24 hours a day and cannot be turned off. All fire systems require regular testing and maintenance. Common household dust build-up in smoke detectors can cause them to false alarm or fail. Contact your local ADT Service Representative to arrange for a scheduled maintenance program.

What To Do If The Fire Alarm Sounds

1. The red ALARM indicator will be lighted and the alarm sounder will be sounding steadily. The ZONE indicator(s) corresponding to the Fire Zone(s) in alarm will also be lighted. If the alarm was activated manually from the operating panel emergency key, only the red ALARM indicator will be lighted.
2. Enter your User Code to silence the fire alarm. After you have entered your User Code and the sounders are silenced, the system will allow you two minutes to "clear" the smoke detectors. Use this time to clear any existing smoke from the immediate area around the smoke detector. If you are unable to clear the smoke condition within two minutes, the red ARMED indicator will remain lighted. If this happens, call your ADT service representative.
3. If the TROUBLE indicator lights, a *Fire Supervisory/Trouble* condition may exist. Refer to page D or consult your ADT Service Representative to define the trouble condition.

Notify the ADT Central Station and/or the proper authorities immediately if the alarm was unintentional.

Emergency Evacuation Plan

Preparation and education are of prime importance in the prevention of fire. An emergency evacuation plan should be established BEFORE an emergency situation arises. Your system may or may not contain fire detection and notification equipment. Ask your ADT Service Representative to explain your system's capabilities and make certain that you fully understand exactly what your system consists of. Use the following steps in establishing an emergency evacuation plan:

1. Evaluate all possible escape routes from your home and draw a floor plan.
2. Select two exit escape routes from each room.
3. Provide emergency escape ladders for rooms above the first floor. Check the ladders to be sure that they will reach the ground.
4. Draw a rough sketch of your escape plan so that everyone is familiar with it.
5. Practice your escape plan to assure that everyone knows what they have to do in an emergency situation.
6. Establish a meeting place outside where your family is to report.
7. Advise the local fire authority if you have installed a fire alarm system.

Discuss the following with all residents:

1. Familiarity with alarm signals.
2. Status of bedroom doors.
3. Testing of door during a fire and use of alternate escape routes if HOT to touch.
4. Crawling and holding breath techniques during a fire.
5. Escape FAST, DO NOT STOP for packing.
6. Emphasize that no one is to return to a burning building.

Fire Prevention and Escape

The purpose of heat and smoke detectors is to detect a fire in its earliest stages and sound an alarm, giving occupants more time to exit the premises before smoke reaches a dangerous level.

□ KNOW FIRE HAZARDS

No detection device can protect life in all situations; therefore, safeguards should be taken to avoid such potentially dangerous situations as smoking in bed, leaving children home alone, and cleaning with flammable liquids such as gasoline.

The best fire protection is minimizing fire hazards through proper storage of materials and good housekeeping practices. Careless use of combustible materials and electrical appliances or overloading of electrical outlets are major causes of fire. Explosive and fast burning materials must be eliminated from the home.

□ IN CASE OF FIRE

Leave immediately! Do not stop to pack or search for valuables. In heavy smoke, hold your breath and stay low — crawl if necessary. The clearest air usually is at the floor. If you have to go through a closed door, carefully feel the door and door knob to see if undue heat is present. If relatively cool, brace your foot against the bottom of the door with your hip against the middle, and one hand against the top edge. Open slightly. If there is a rush of hot air, slam the door quickly and latch it. Unvented fire will build up considerable pressure. Be sure that all the household realizes this danger.

Use your neighbors phone or street fire alarm box. The job of extinguishing the fire should be left to the professionals. Too many unforeseen things can occur when inexperienced people try to extinguish a fire.

□ BE PREPARED

Perform fire drills regularly. Use them to assure recognition of an alarm signal. For your protection, simulate different circumstances (smoke the hall, living room, etc.). Then have everyone react to the situation. Draw a floor plan and show two exits from each room. It is important that children be instructed carefully. Their tendency is to hide in a crisis.

It is imperative that one meeting place outside the home be established. You should insist that everyone meet there during an alarm. This will eliminate the tragedy of someone re-entering the house for a missing member who is actually safe.

If you have small children and/or invalids residing in your household, you can help your fire department by placing decals on bedroom windows. Most fire departments supply the decals.

Become familiar with the distinctive sounds of your Fire alarm and Burglar alarm signals.

FIRE PROTECTION

□ Smoke Detector Location

Smoke detectors should be installed in accordance with the National Fire Protection Association (NFPA) Standard 74.

The following is from NFPA 74: Smoke detectors shall be installed outside of each separate sleeping area in the immediate vicinity of the bedrooms and on each additional story of the family living unit including basement and excluding crawl spaces and unfinished attics (see illustration below). For family living units with one or more split levels (i.e., adjacent levels with less than one full story separation between levels), a smoke detector required by the above shall suffice for an adjacent lower level, including basements.

EXCEPTION: Where there is an intervening door between one level and the adjacent lower level, a smoke detector shall be installed on the lower level.

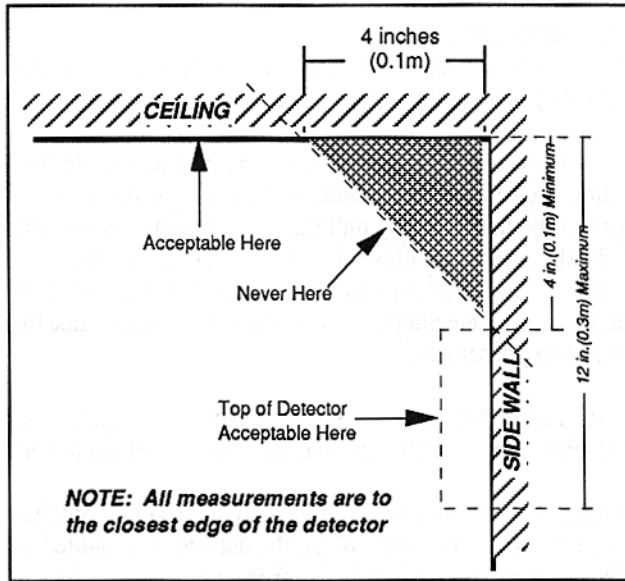
Ceiling mounted smoke alarms should be located in the center of the room or hall, not less than 4 inches from any wall. When the detector is mounted on a wall, the top of the detector should be 4 to 12 inches from the ceiling.

Do not install smoke alarms where normal ambient temperatures are above 100°F (37.8°C), or below 40°F (4°C).

Also, do not locate smoke detectors in front of air conditioners, heating registers, or other locations where normal air circulation will keep smoke from entering the detector.

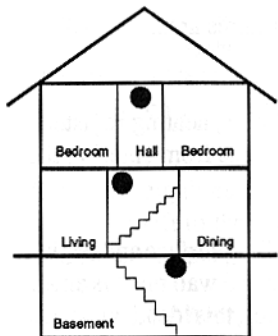
Heat from a fire rises to the ceiling, spreads out across the ceiling surface and begins to bank down from the ceiling. The corner where the ceiling and wall meet is an air space into which heat has difficulty in penetrating. In most fires, this 'dead' air space measures about 4 inches (0.1m) along the ceiling from the corner and 4 inches (0.1m) down the wall as shown in the illustration below. Heat or smoke detectors should not be placed in this 'dead' air space." (See illustration on next page).

Smoke Detector Placement

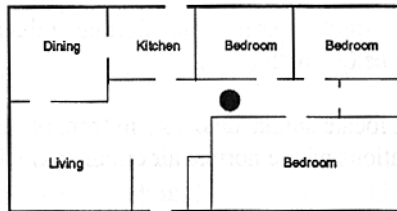


Emergency Evacuation Plan

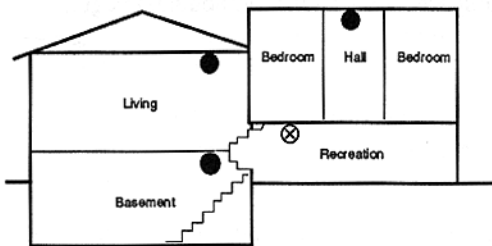
Use this page to draw a floor plan of your building which indicates two possible evacuation routes that all residents should take in the event of a fire.



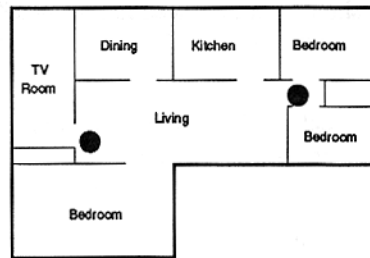
A Smoke Detector should be located on each story.



A Smoke Detector should be located between the sleeping area and the rest of the family living unit.



● Indicates required smoke detector



⊗ Indicates smoke detector is optional if door is not provided between living and recreational rooms.

Glossary

Alarm Memory: A history of the alarm that last occurred.

Arm: To turn the intrusion detection system on.

Bypass: To temporarily remove a zone from operation. To Shunt a zone.

Control Panel: The main system electronics housed in a metal enclosure.

Delay Zone: Zone which allows a programmable amount of time to enter and disarm the system without activating an alarm. Also provides an exit time to leave the premises after arming. "Delay" may be assigned to any number of zones.

Disarm: To turn the intrusion detection system off.

Entrance Delay: Time permitted to enter the armed premises through a delay door.

Faulted: A detection area which is not secure such as a protected door or window which has been left open causing the control to loose its "Ready" status.

Hardwire Zones: The six areas of protection referred to as Zones 1 through 6 on the operating panel.

Indicator Lights: The ten lights (LEDs) on the operating panel.

Interior: Areas of the building which are protected by motion detectors, interior door contacts and sensors hidden under the carpet.

Interior Follower Feature: Converts interior zones to delay zones upon entry through a delay door. Interior follower provides passage through interior detection zones to the operating panel in order to disarm the system.

Keypad: A generic term for the operating panel.

Master User Code (Master User Authorization Code): A code which functions identically to the User Codes, plus may be used to enter the programming mode.

Operating Panel: The remote station used to enter instructions to the control panel such as to arm, disarm and bypass. Also called a keypad.

Perimeter: Protected perimeter doors and windows.

Program: To set the operating characteristics of the main system electronics such as the code which is used to arm and disarm.

Ready: The system is ready to be armed.

Reset Key: The "*" key. Used to clear improper numeric entries and to silence the operating panel sounder.

Sensors: Devices that detect violations and report such conditions to the control panel. Sensors include door and window contacts or any device used to inform the control of a particular condition.

Shunt: See "Bypass."

Supervisory/Trouble: Your installer may have defined one or more of your control's zones for supervisory/trouble condition indication. (All Fire zones are automatically supervisory/trouble zones). If a wire breaks on a supervisory/trouble Fire zone, the operating panel sounder will beep continuously to alert you of the problem. Pressing the "*" key will silence the operating panel sounder. In some cases, burglar zones may be also defined as such to indicate a broken wire when the system is disarmed. An example of this would be for a store with alarm foil protecting the glass. If the foil is cut during store hours, the owner will be alerted and not have to wait until closing time to find out that service is required.

Twenty Four (24) Hour Zone: A zone that is permanently active 24 hours a day such as a FIRE or EMERGENCY zone.

User Code (User Authorization Code): A code which is used to arm and disarm the system.

Zones: The six areas of protection represented by Zone indicators 1-6.

Index

Access operation	12
Alarm conditions	8
Alarm indicator	4, 8
Armed indicator	4, 5
Arming	5
Automatic interior off	6
Bypassing zones	11
Chime mode	10
Delay	5, 6, 7
Disarming	7
Emergency panic alarms	9
Entry delay	5, 7
Emergency evacuation plan	15, 19
Exit delay	5
False alarms	8
Fire	14
Fire supervisory/trouble	14
Interior	5, 6
Interior follower	7
Key switch operation	12
Leaving	5
Monitoring of zones	10
Motion detectors	5
Perimeter	5
Ready light	4, 5, 6
Reset key	12
Smoke detectors	14
Testing	13
Trouble indicator	4, 14
Two digit arming	6
Zone indicators	4, 5, 6, 8

LIMITED WARRANTY

Terms and Conditions Applying To Sale Of Equipment

1. Limited Warranty-Any part of the system including the wiring, installed under this Agreement which proves to be defective in material or workmanship within 90 days of the date of completion of installation will be repaired or replaced at ADT's option with a new or functionally operative part. Labor and material required to repair or replace such defective components or to make mechanical adjustments to the system will be free of charge for a period of 90 days following the completion of the original installation.

This warranty is extended only to the original consumer purchaser of the system and may be enforced only by such person.

To obtain service under this warranty, call or write our local ADT Service Department at the telephone number or address found in your local yellow pages.

Service pursuant to the warranty will be furnished only during ADT's normal working hours 8:00A.M. to 4:30P.M., Monday through Friday, except holidays. Services rendered outside the normal working hours of ADT are not within the scope of this warranty and any services requested to be performed at such times shall be charged for at ADT's then applicable rates for labor and material.

This warranty does not apply to the conditions listed below and in the event customer calls ADT for service under the warranty and upon inspection it is found that one of these conditions has led to the inoperability or apparent inoperability of the system, a charge will be made for the service call of the ADT representative whether or not he actually works on the system. Should it actually be necessary to make repairs to the system due to one of the "conditions not covered by warranty", a charge will be made for such work at ADT's then applicable rates for labor and material.

Conditions Not Covered By Warranty. A. Damage from accidents, acts of God, alterations, misuse, tampering or abuse. B. Failure of the customer to properly close or secure a door, window, or other point protected by a burglar alarm device. C. Failure of customer to properly follow operating instructions provided by ADT at time of installation or at a later date. D. Trouble in leased telephone. E. Trouble due to interruption of commercial power. F. Battery replacements.

The above warranty is in lieu of all other express warranties, any implied warranties of merchant ability and fitness for a particular purpose are limited in duration to a period of 90 days from the date of completion of installation. The exclusive remedy of the customer hereunder shall be repair or replacement as stated above. Under no circumstances shall ADT be liable to the customer or any other person for incidental or consequential damages of any nature, including without limitation, damages for personal injury or damages to property, and, however occasioned, whether alleged as resulting from breach of warranty by ADT, the negligence of ADT, or otherwise, ADT's liability will in no event exceed the purchase price of the system. Some states may not allow limitations on how long an implied warranty lasts, or the exclusion or limitations of incidental or consequential damages, so the above limitations and exclusions may not apply to you, unless a longer period is required by applicable law. Any action against ADT in connection with system must be commenced within one year after the cause of action has accrued.

No agent, employee or representative of ADT nor any other person is authorized to modify this warranty in any respect.

This warranty gives you specific legal rights and you may also have other rights which vary from state to state.

2. Installation-ADT agrees to install the equipment in a workmanlike manner in accordance with the following conditions: A. Customer will make premises available without interruption during ADT normal working hours 8:00A.M. to 4:30P.M., Monday through Friday, except holidays. B. Customer understands that the installation will necessitate drilling into various parts of the premises. ADT intends, generally, to conceal wiring in the finished areas of the premises, however, there may be areas which due to construction, decoration, or furnishing of the premises, ADT determines, in its sole discretion, that it would be impractical to conceal with wiring and in such cases, wiring will be exposed. C. Customer agrees to provide 110 AC electrical outlets at designated locations for equipment requiring AC power. D. Customer to provide for lifting and replacing carpeting, if required, for installation of floor mats or wiring.

FCC COMPLIANCE

This equipment has been tested and found to comply with the limits for a Class B digital device, pursuant to Part 15 of the FCC Rules. These limits are designed to provide reasonable protection against harmful interference when the equipment is operated in a residential environment. This equipment generates, uses, and can radiate radio frequency energy and, if not installed and used in accordance with the instruction manual, may cause harmful interference to radio communications. However, there is no guarantee that interference will not occur in a particular installation. If this equipment does cause harmful interference to radio or television reception, which can be determined by turning the equipment off or on, the user is encouraged to try to correct the interference by one or more of the following measures:

- Reorient or relocate the receiving antenna.
- Increase the separation between the equipment and receiver.
- Connect the equipment into an outlet on a circuit different from that to which the receiver is connected.
- Consult the dealer or an experienced radio/TV technician for help.

CAUTION: Changes or modifications not expressly approved by the manufacturer could void the user's authority to operate the equipment.

ALL RIGHTS RESERVED

No part of this publication may be reproduced, stored in a retrieval system, or transmitted in any form, or by any means - electronic, mechanical, photocopying, recording, or otherwise without the prior written permission of ADT Security Systems, Inc. The material in this publication is for information purposes and subject to change without notice. ADT Security Systems, Inc. assumes no responsibility for any errors which may appear in this publication. Printed in U.S.A.

© 1990 ADT Security Systems, Inc.
300 Interpace Parkway • Parsippany, N.J. 07054